



VAN DER HEIJDEN  
Labortechnik GmbH

COOL SOLUTIONS - YOUR ADVANTAGE



## CS-CHILLER

COOL&SMART COMBINED IN ONE UNIT!

The brand new CS chiller range offers air-cooled models in different performance classes up to 70 kW.

# TECHNICAL DATA:

## YOUR ADVANTAGES:

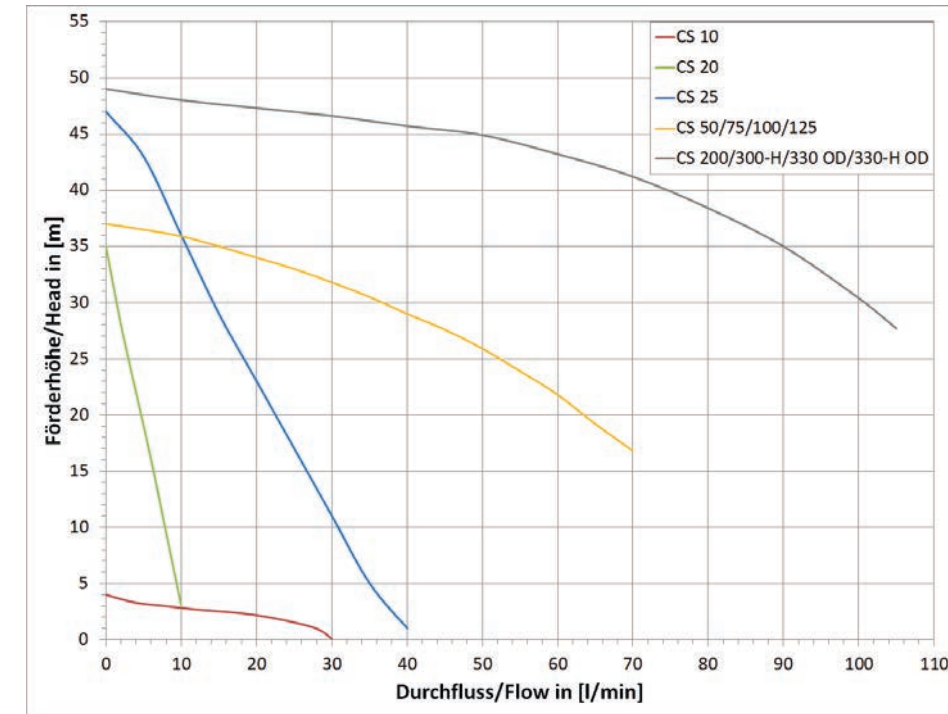
- Economic and ecological solution to eliminate costly water waste
- Easy to use and maintenance free
- Quiet operation less than 78 db
- Budget friendly purchasing price

## PERFECT COOLING SOLUTION FOR MANY APPLICATIONS, SUCH AS:

- Rotary evaporators
- Electron microscopy
- AAS-devices
- ICP-devices
- Extraction
- Distillation
- and many more



# PUMP CURVE:



Articel No.	Model	Temp. Range (°C)	Pump capacity max. / pump connection		Cooling Power (kW) @ (°C)					Heating Power (kW)	Noise Level (db)	Dimensions W x D x H (mm)	Voltage	
			(l/min)	(bar)	15	10	0	-10	-20					
1-101293	CS 10	-20...+15	30	0.4	3/8"	1.2	1.0	0.5	0.25	0.15	-	50	430 x 470 x 695	230V 1- 50Hz
1-101106	CS 20	-20...+15	10	3.5	3/8"	2.2	2.0	1.3	0.9	0.5	-	67	530 x 580 x 750	230V 1- 50Hz
1-101107	CS 25	-20...+15	40	4.5	1/2"	3.5	2.5	1.6	0.98	0.7	-	60	580 x 660 x 825	230V 1- 50Hz
1-101108	CS 50	-20...+15	70	3.7	3/4"	8.0	5.0	4.2	3.5	2.0	-	63	680 x 730 x 1520	400V 3- 50Hz
1-101109	CS 75	-20...+15	70	3.7	3/4"	9.0	7.5	5.5	3.0	2.4	-	66	800 x 850 x 1665	400V 3- 50Hz
1-101104	CS 100	-20...+15	70	3.7	3/4"	18	10	9.5	7.5	4.5	-	70	800 x 850 x 1665	400V 3- 50Hz
1-101110	CS 125	-20...+15	70	3.7	3/4"	17	12.5	12	9	6	-	75	1400 x 1000 x 1800	400V 3- 50Hz
1-101105	CS 200	-20...+15	105	4.7	1"	28	20	18	15	9.5	-	78	1400 x 1000 x 1800	400V 3- 50Hz
4-100096	CS 200-H	-20...+85	105	4.7	1"	28	20	18	15	9.5	5.5	78	1400 x 1000 x 1800	400V 3- 50Hz
32-100107	CS 330 OD	-20...+15	105	4.7	1"	42	35	25	17	11	-	78	1400 x 1000 x 1800	400V 3- 50Hz
4-100097	CS 330-H OD	-20...+85	105	4.7	1"	42	35	25	17	11	8	78	1400 x 1000 x 1800	400V 3- 50Hz
32-100112	CS 550 OD	-20...+15	105	4.7	1"	70	60	33	20	12	-	77	1400 x 1000 x 1800	400V 3- 50Hz

\* All models are aircooled and with refrigerant R449A.

H = Heating OD = Outdoor



## LCS 80:



Technical Data	KÜHLMOBIL LCS 80
Cooling power	20 kW at -15°C / 16 kW at -25°C / 8.5 kW at -40°C
Ambient temperature	up to +50°C
Pump capacity max.	53 l/min.
Feed pressure max.	4.7 bar
Connections	1" ball valves with hose connections
Tank volume	105 l
Dimensions W x D x H	2015 x 1100 x 2000 mm
Power supply requirement	400 V 3~ 50 Hz
Max. current	60 A
Weight	880 kg
Refrigerant	R449A
Sound pressure level +/- 4 dB(A)	77 dB(A)

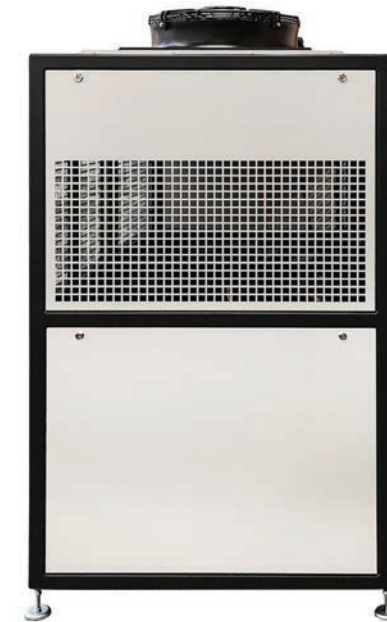
### BETTER, STRONGER AND COLDER:

The latest product from Van der Heijden is the LCS 80 developed for Huber USA.

The device is performance-optimized thanks to a built-in high-performance fan motor and micro-channel technology, and can be set up both indoors and outdoors. The permissible ambient temperature is -20°C to +50°C. It can be operated comfortably from the interior.

The chiller delivers an excellent cooling capacity of 8 kW at -40°C and is equipped with a capacitive user interface as a remote control with OLED display. The LCS 80 chiller has an air-cooled cooling unit and a powerful circulation pump (stainless steel). With plug-and-play technology, the LCS 80 is a solution for wide-ranging applications.

In the USA, the device is mainly used in the extraction industry and in the pharmaceutical sector and is set to conquer the market there. Further modified versions are planned.





# VAN DER HEIJDEN - YOUR PARTNER IN COOLING



## Budget Friendly

Van der Heijden chillers offer very high value due to the competitive pricing, amount of delivered cooling power and the very short payback period compared with running water costs. A 2 year minimum warranty which may be extended to 3, gives reassurance of the high quality and life expectancy of the chillers.



## Eco-friendly Cooling

Our chillers save 100% water when compared to using running water cooling. Maximum energy efficiency is achieved by only using the compressor when needed. Water to water chillers do not need a compressor, delivering even more savings. Water cooled chillers do not discharge waste air to the ambient room.



## Company Experience

Van der Heijden have been manufacturing for over 40 years and has extensive knowledge and experience of cooling technology. Having developed many chiller models in close collaboration with world leading instrument manufacturers, you can be assured that we understand your requirements. German design and manufacturing but with a global service support network.



## Customised Solution

Our chillers are fully customisable with almost infinite options even for a single unit or multiple manufacture. E.g. models are available as system separators up to 150 kW cooling power, increased stability control, and many more. Very high quality components and construction can prevent the formation of condensation on pipework during the Summer.



## Easy Operation

The units are ready to use and easy to set up. The menu shows understandable text descriptions of warnings or fault conditions and no codes. All models are equipped with a hinged lid for easy coolant refill and easy access at service and castors for easy manoeuvrability. The temperature setting as required (can be factory set).



## High Quality

Our robust air and water-cooled chillers with a 2 mm epoxy coated metal case are suitable for 24/7 use. A high-pressure pump feed allows good flow rates. Constant supply of water quality, temperature and pressure. Low or no noise and vibration, no fan and very low heat generation on water-cooled units. No compressor on water-water chillers.



# SUPPORT & SERVICE

## What can you expect?



### SPECIAL-PURPOSE SOLUTION

We are specialized in manufacturing special-purpose solutions, beside a wide standard product range. Our particular strength is providing comprehensive advice and individual configurations to meet your requirements.



### PRODUCT TRAINING

This training can be delivered to you locally or via webinar, whichever is easiest for you.



### SERVICE TRAINING

If required you and your team can come over to Van der Heijden for a personalized service training.



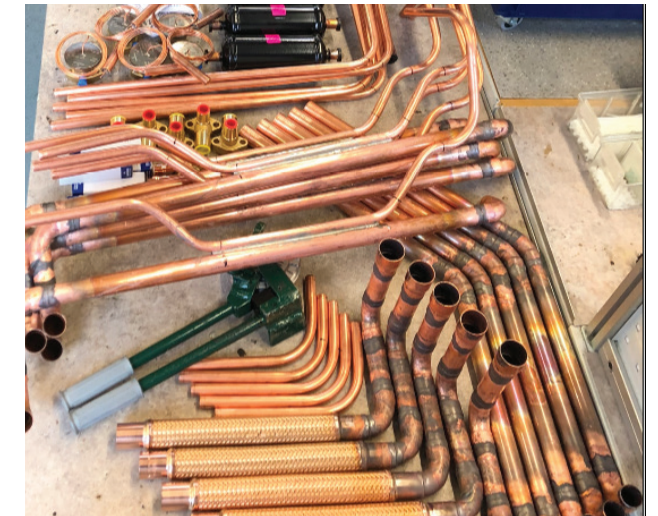
### 2-YEAR WARRANTY

Service and repairs are initiated on the first day of return to Van der Heijden' factory, alternatively, spare parts and service manuals can be despatched.



### PROMPT AND THOROUGH RESPONSE

to your enquiry to you and/or your end user, sometimes on more technical queries. We always aim to respond within 24 hours.



## COOL SOLUTIONS - YOUR ADVANTAGE







## Contact Us

---

We offer our help to you, quickly and competently, and look forward to your questions and your feedback. Please use the following contact information:



Tel: +49 (0) 5265/94552-0  
Fax: +49 (0) 5265/94552-10



[info@vdh-online.com](mailto:info@vdh-online.com)  
[www.vdh-online.com](http://www.vdh-online.com)



Tramsmeiers Berg 2  
32694 Dörentrup, Germany

